



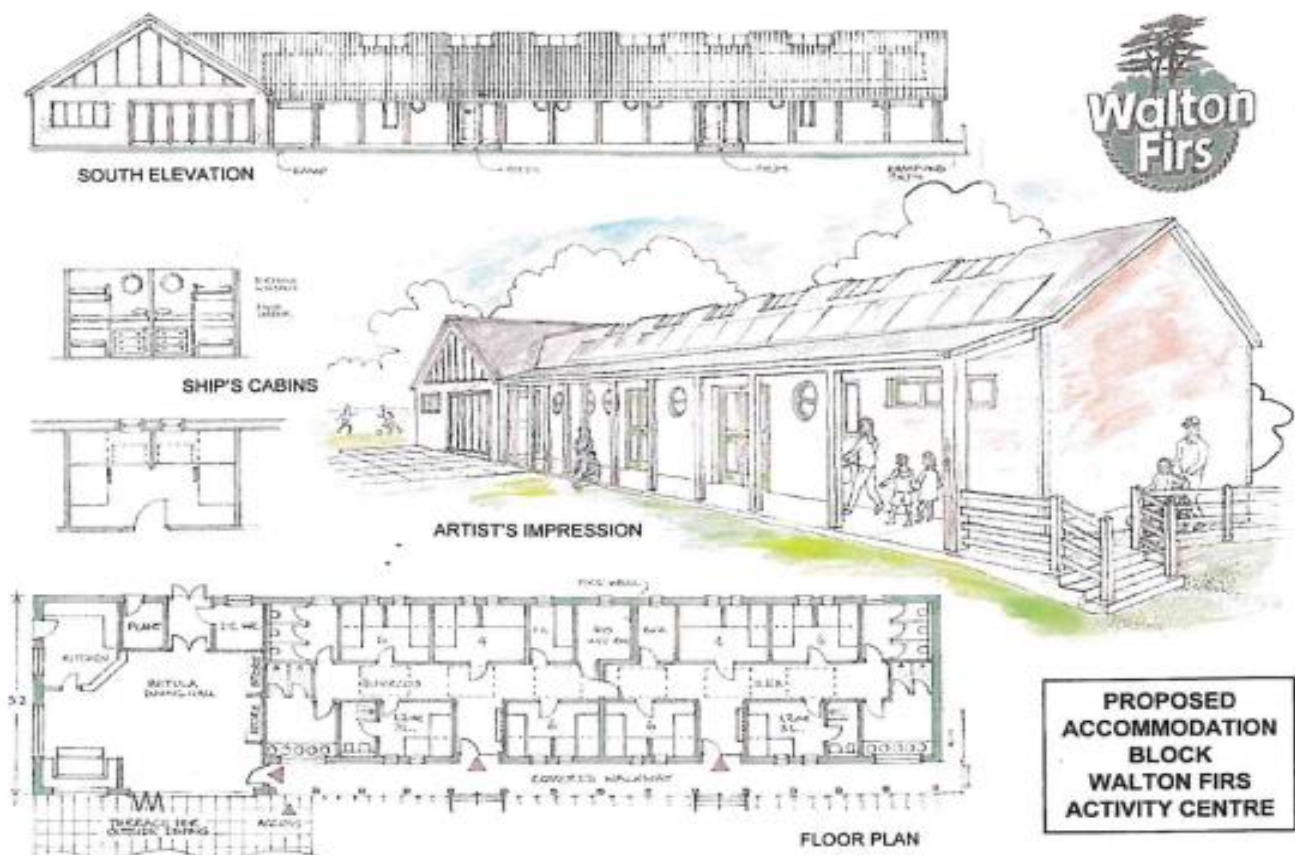
Walton Firs Activity Centre
Convent Lane
Cobham
Surrey
KT11 1HB

Telephone: 01932 863 243
Email: info@waltonfirs.co.uk
Website: www.waltonfirs.co.uk

The Wilman Lodge – A New Residential Facility for Young People

The Walton Firs Foundation is seeking to raise £800,000 to build a new purpose-built accommodation facility that will provide:

- Modern, fit-for-purpose residential accommodation for groups of up to 36 people
 - A meeting place for local community organisations and interest groups
 - A fully equipped catering kitchen and indoor dining area
- An environmentally sustainable and energy-efficient design that generates surplus electricity
 - Full access for people who have disabilities and limited mobility
 - An outdoor terrace overlooking an area of natural beauty



**PROPOSED
ACCOMMODATION
BLOCK
WALTON FIRS
ACTIVITY CENTRE**



Recipient of The Queen's Award for Voluntary Service



Where young people learn, develop and enjoy in the natural environment

The Wilman Lodge – a New Residential Facility for Young People

- The Walton Firs Foundation is a Surrey-based charity with educational objectives
- The Foundation enables young people to learn, develop and enjoy in the natural environment, through the delivery of high-quality outdoor education services
- Walton Firs Activity Centre delivers outdoor learning and volunteering services for young people that promote their personal development and social inclusion, support their physical health and emotional wellbeing, and enhance their appreciation of the natural environment
- The activity centre works in partnership with early years, primary, secondary and SEND education providers; uniformed youth organisations and cadets forces; and children's, youth and social care services providers
- The Wilman Lodge has been proposed as a replacement for the current Pembroke building, which has provided residential accommodation for young people for over forty years, and which now urgently requires replacement
- The Wilman Lodge has been designed to:
 - To accommodate a classroom group of up to 32 pupils and up to 4 adults in high quality residential facilities, including accessible washroom facilities
 - Provide a meeting facility for local community interest groups and organisations
 - Enable all people, including those with additional physical support needs, to have full access to the building's facilities
 - Minimise its environmental impact, using solar and ground-sourced energy to generate and store electricity
 - To have a minimum life of fifty years of use
- To date, the Walton Firs Foundation has raised £100,000 of the £800,000 required to underwrite the capital programme
- The Foundation hopes to commence the capital programme during the winter of 2025/26, with an aim for the new facility to be in use by April 2026

For more information about the Walton Firs Foundation, Walton Firs Activity Centre, or the Wilman Lodge, please contact Chris Scott, Chief Executive Officer and Activity Centre Manager, on 01932 863 243, or via email: chris.scott@waltonfirs.co.uk

Walton Firs Foundation

Registered Office: Dixcart House, Addlestone Road, Bourne Business Park, Addlestone, Surrey KT15 2LE

Incorporated in England as a Company Limited by Guarantee Number 5695208

Registered Charity Number 1113830