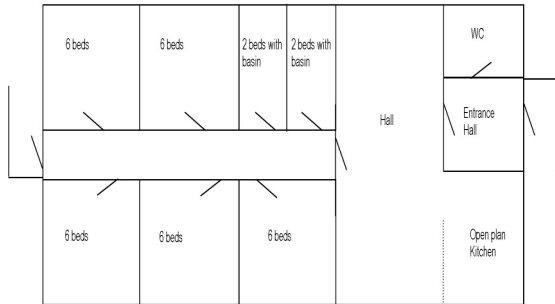




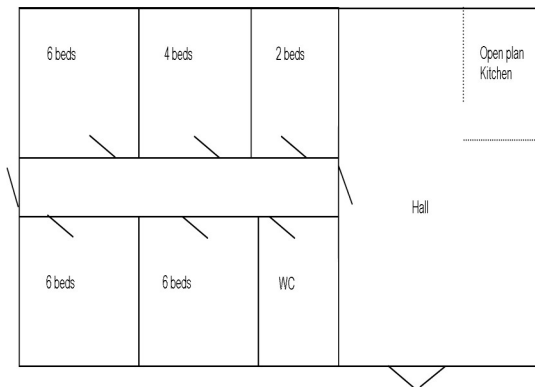
## Buildings

### Pembroke



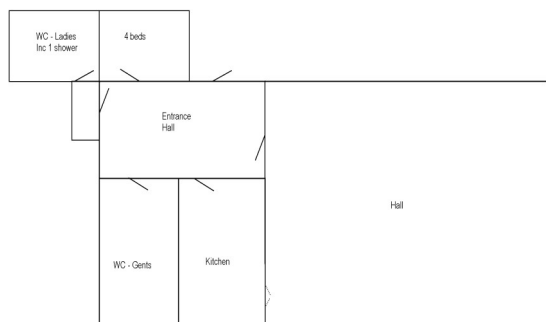
The Pembroke building provides indoor accommodation for a maximum of 34 young people and leaders. The facilities include a fully equipped kitchen, large main room for dining, equipped with tables and chairs. Sleeping quarters comprise of 5 rooms with 6 beds, 2 rooms with 2 (all bunk beds). You will need to bring sleeping bags and pillows.

### Brunswick



The Brunswick building sleeping quarters are 3 rooms with 6 beds, 1 room with 4 and 1 room with 2 (all bunk beds). Fully equipped kitchen and dining area with table and chairs. Again, sleeping bags and pillows needed.

### Training Hut



The Training Hut can accommodate up to 36 people if used as indoor sleeping quarters. The facilities include a large main hall that can be used for indoor training or as a classroom. The building has a fully equipped kitchen, shower and toilet facilities. The Hut has leaders sleeping quarters with 4 beds (bunk beds). At a small additional cost, there is a projector and other teaching resources available for use in the Training Hut.